



CLADDING PARTNER



WWW.COBBLESTONEINDIA.COM

Contact Details -

M. No. +91-9999853053

Email - sales@cobblestoneindia.com

Experience Centre Location -

1A, Shop No.3, Vishwakarma Colony,
MB Road, Indian Oil Petrol Pump, Prahladpur,
New Delhi-110044





Contrive the curvature of your walls with “The Flexible Cladding” by Elevate building Solutions. Brainchild of our expert, The Flexible Cladding is an affix to arched surfaces conferring endurance along with the beauty. The buoyant textures of the product is designed to embellish high-rise buildings. It is slender, paperlike and light in weight that promotes simplified application on any substrate.

The Flexible Cladding products are designed to simulate nature hence no two products will be identical in color, thickness, dimensions, enhancing natural aesthetics of products.

Physical & Mechanical Attributes

- Patented Technology
- Made up of Unfired Natural clay
- Articlاد takes the pride to be only manufacturer of product in country.
- 2 - 4mm Thin
- Light weight makes it a preferred choice for high rise cladding
- Flexible, Harmonized to complex architecture design.
- High Impact resistant
- High Weather resistance
- Water absorption : less than 1%
- Frost resistance from 200 cycles.
- High moisture resistance
- High water resistance
- Meteoric Installation Than Traditional Masonry
- High abrasion resistance
- Good vapour permeability (0.12 mg/sq.m/h/po)
- Weight: 5.2 kg / sq.m. (With thickness of 4 mm, taking into account the alignment)
- UV resistance
- Eco friendly

TFCT01



TRAVERTINE

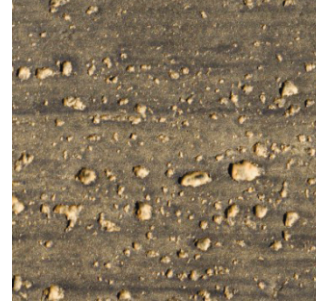
TFCT02



TFCT03



TFCT04



TFCT05



TFCT06



TFCT07



TEXTURE	: TRAVERTINE
DIMENSION	: 1180 x 580MM
THICKNESS	: 3 - 5MM (+ / - 1MM)
COLOR OPTIONS	: SINGLE TONE / MULTIPLE TONES
GRADE	: EXTERIOR

TFCS01

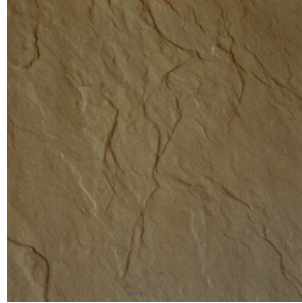


SLATE

TFCS02



TFCS03



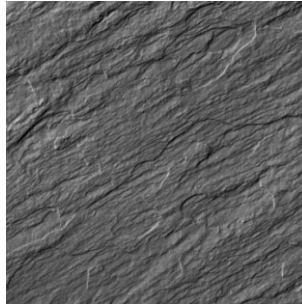
TFCS04



TFCS05



TFCS06



TFCS07



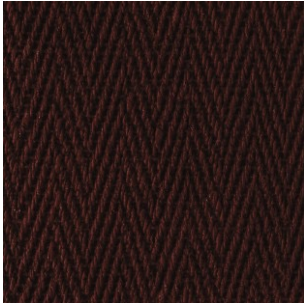
TEXTURE	:	SLATE
DIMENSION	:	1130 x 555MM
THICKNESS	:	3 - 5MM (+ / - 1MM)
COLOR OPTIONS	:	SINGLE TONE / MULTIPLE TONES
GRADE	:	EXTERIOR

TFCRK01

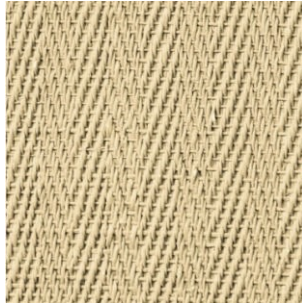


ROPE KNOT

TFCRK02



TFCRK03



TFCRK04



TFCRK05



TFCRK06



TFCRK07



TEXTURE	:	ROPE KNOT
DIMENSION	:	1480 x 580MM
THICKNESS	:	3 - 5MM (+ / - 1MM)
COLOR OPTIONS	:	SINGLE TONE / MULTIPLE TONES
GRADE	:	EXTERIOR

TFCCS01



CORTEN STEEL

TFCCS02



TFCCS03



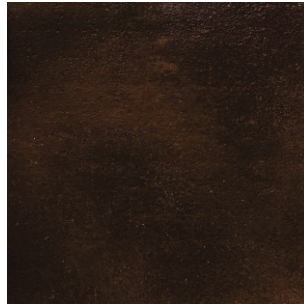
TFCCS04



TFCCS05



TFCCS06



TFCCS07



TEXTURE	:	CORTEN STEEL
DIMENSION	:	1180 x 580mm
THICKNESS	:	3 - 5MM (+ / - 1MM)
COLOR OPTIONS	:	SINGLE TONE / MULTIPLE TONES
GRADE	:	EXTERIOR

TFCB01

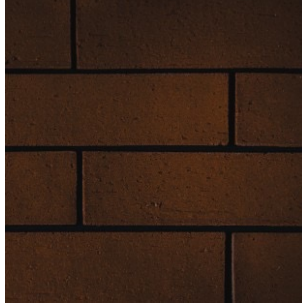


BRICK

TFCB02



TFCB03



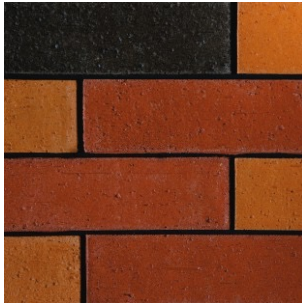
TFCB04



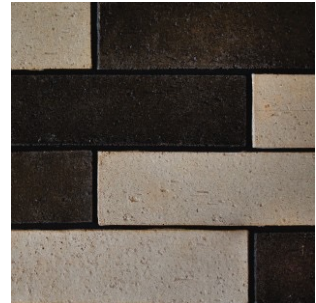
TFCB05



TFCB06



TFCB07



TEXTURE	:	BRICK
DIMENSION	:	240 x 60MM
THICKNESS	:	3 - 5MM (+ / - 1MM)
COLOR OPTIONS	:	SINGLE TONE / MULTIPLE TONES
GRADE	:	EXTERIOR

TFCW01



WOOD

TFCW02



TFCW03



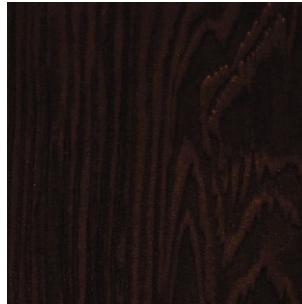
TFCW04



TFCT05



TFCT06



TFCT07



TEXTURE : WOODEN
DIMENSION : 900 x 150MM
THICKNESS : 3 - 5MM (+ / - 1MM)
COLOR OPTIONS : SINGLE TONE / MULTIPLE TONES
GRADE : EXTERIOR

Application Procedure

Preparing the Right Tools In order to carry out the work simply, quickly, and properly, you will need to acquire the following tools :-

- 1) Selecting the right Adhesive Based upon surface
- 2) Spirit level
- 3) Ruler
- 4) Tooth Trowel
- 5) Chipping Hammer
- 6) Sealant
- 7) Cleaning Towel



Method of Installation

- Step 1:** Clear all dirt, oil, grease, or other contaminants and remove all loose plaster, paint and scale on wall. Chip the existing painted wall surfaces with a chipping hammer and brush away all the flaky bits. Ensure that all surfaces are structurally sound.
- Step 2:** Apply a scratch coat to cover and level any uneven wall surface (it is important to even the surface) if necessary and allow it to set prior to applying the adhesive mortar. Prepare the adhesive mortar according to the manufacturer's instructions. Be careful that you add appropriate amount of water/latex in order to achieve good workability. Apply the mortar and level with a flat side of a trowel (to about 1-2mm thick for The flexible cladding/ to about 4-8mm for cultured stone and brick) comb the surface with the notched side of the tooth trowel and remove the excess mortar.
- Step 3:** Press the product firmly and evenly onto the wall surface so that mortar behind the product squeezes out around its sides. Use a gentle wiggling action whilst pressing to ensure a strong bond between the product and wall surface.
- Step 4:** Apply edge to edge joint towards a same direction. Apply adhesive appropriately at the joint angle. The product can be cut using tile cutter or sharp scissor.
- Step 5:** If you want to grout the joints, use a grouting pallet tools to carefully fill in the joints the mortar. If you prefer colored joints, oxide colorants can be mixed with the mortar. Take care not to dirty the veneer surface as cleaning is a hassle. Use a round or flat pointing tool to finish the joints when the mortar is thumbprint hard. Do not work on the joints too soon or the mortar will smear. Lastly, brush away any loose or excess dry mortar.

Note: Installation procedures may vary based upon surface and application pattern. It is not at all recommended to carry out installation during a severe rain storm or heavy snow fall as the wall surface are not suitable for good installation surface bindings of the materials to the walls (external application).

CLADDING PARTNER



WWW.COBBLESTONEINDIA.COM

Contact Details -

M. No. +91-9999853053

Email - sales@cobblestoneindia.com

Experience Centre Location -

1A, Shop No.3, Vishwakarma Colony,
MB Road, Indian Oil Petrol Pump, Prahladpur,
New Delhi-110044





ELEVATE

BUILDING SOLUTIONS LLP



<https://m.facebook.com/TeamArticlad/>



<https://www.instagram.com/articlad/?hl=en>



<https://in.pinterest.com/TeamArticlad/>



+91 8828283063



+91 9167583903



www.articlad.com



info@articlad.com



Omega business park, unit 510, wagle industrial estate, Thane (w) - 400 604

